



Burlington Juniors Weekly News



SCHOOL MEMBER



@burlingtonjnr

Autumn Term
21st October 2022

Governors email: a.moss@bjs.eriding.net

School Phone Number 01262 674487

www.burlingtonjuniorschool.org

Picture News



**If we do something wrong,
who should decide the consequences?**



In the news this week

All Lidl chocolate bunnies are to be melted after chocolate maker, Lindt, said they looked too similar to their own bunny shaped chocolate treat. The Federal Supreme Court of Switzerland said that regardless of whether Lidl's packaging was golden or a different colour, they had too much similarity. The ruling banned the supermarket from selling the bunnies and ordered ones already produced to be destroyed.

Things to talk about at home ...

- > Do you think it was the right decision to make Lidl melt down all the chocolate bunnies? Can you suggest any different ways the issue could have been resolved?
- > Have you ever heard the saying, 'what goes around comes around'? Has anyone at home ever said it? What do you imagine it means and do you agree?

Please note any interesting thoughts or comments

Share your thoughts and read the opinions of others

www.picture-news.co.uk/discuss



© Picture News 2022

This Week's Useful Vocabulary

Banned – Something officially or legally prevented. The ruling banned the supermarket from selling the bunnies and ordered them to be destroyed.

Consequence – A result or effect, often unwelcome, unpleasant. Every action we take has a consequence.

Court – A place where legal matters are decided by a judge and jury or by a magistrate. Why may Lindt have decided to take such serious action as going to court against Lidl.

Destroyed – Ended the existence of something. The ruling banned the supermarket from selling the bunnies and ordered them to be destroyed.

Regardless – Not been affected by something. The Federal Supreme Court of Switzerland said that regardless of whether Lidl's packaging was golden or a different colour, they had too much similarity.

Version – A particular form of something that is slightly different from other forms of the same thing. Lidl have been ordered to melt their bunnies as they are too similar to the Lindt version.

Stay & Read

'Stay & Read' for Year 5 on Tuesday 1st November.

'Stay & Read' for Year 6 on Tuesday 8th November.

Please come straight into school with your child until 9.45am.



Halloween Disco

Thank you to all who supported us at our Halloween Disco, the children loved it!

We have raised an amazing total of £656.47!!



Fun Friday

Thank you to those who took part in our Fun Friday today, and for all of the amazing donations!

Our next Fun Friday will take place on the 4th and the 11th November.

Children can come to school in non-uniform in return for a gift to sell at the Christmas fair.

All profits from the Christmas Fair will be used to help subsidise the price of the Pantomime tickets for all children to The Spa.



Parent Questionnaire

We would be grateful if you would please complete the Autumn Term Questionnaire that has been sent to all parents via message. Alternatively, please follow the link to complete:

<https://forms.gle/MtPiz4XP5YkwnL8q7>

Holidays

Reminder that our school closes today for a week.

The school will re-open on Monday 31st October.

Have a lovely half term!



Music

We currently have spaces for Cello and Woodwind lessons.

The cost of the lessons are £35.00 per term, or £17.50 for children in receipt of free school meals.

If you are interested, please contact the school office.



Congratulations

We would like to congratulate Miss Mills and her partner, on the safe arrival of their new baby girl.



RBL Poppy Appeal



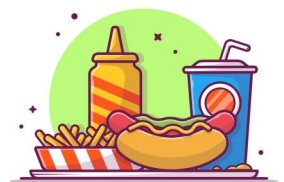
We have various items available at reception in support of the Royal British Legion's Poppy Appeal.

A suggested donation of £1 would be appreciated.

Bonfire Dinner

On Friday 4th November there will be a Bonfire Dinner.

This will consist of Hotdogs, fries, baked beans, chocolate covered flapjack and blackcurrant juice.



Bridlington Soccer School

Please see the link below for information regarding the October half term soccer school:

<https://bridlington-ss.class4kids.co.uk/camp/12>





Set a goal. Change a life. Join a community.

We are recruiting

**All fundraising roles in your area
Bridlington help make a difference**

**For more information, please contact
Pippa.turner@guidedogs.org.uk**

The Guide Dogs for the Blind Association is a company limited by guarantee and a registered charity in England and Wales (209617) and Scotland (SC038979).
GD0364 11/21



**The
Hinge
Centre**

Registered Charity Number: 1146714
Company Number: 06507894



About Us:

The Hinge is a Bridlington based charity offering support, guidance and advice to those within the local community of Bridlington and surrounding areas.

Our three main projects are; Resettlement, Community and Children & Young People.

We have two sites in Bridlington, our building on Field Road and second site in the former Job Centre on Quay Road, now known as Crown Community. The additional building has allowed us to expand the services that we currently offer, providing further groups and sessions to the local community. Some of the sessions which will be operating from Crown Community are: Children's After School Clubs, Community Food Store, Men's Meet and Eat, The Budget Cooking Class and other fun events for children and families!

If you would like to find out more about what we offer, please contact us on 01262 679671 or contact via email or our Social Media platforms.

Follow our social media pages for regular updates!

Facebook: Hinge Bridlington
Twitter: @hingecentreld
Instagram: @thehingecentre

CONTACT US FOR MORE INFO

01262 679671

19-21 Field Road, Bridlington, YO16 4AU
Crown Community, Quay Road,
Bridlington, YO16 4LY

info@thehinge.org.uk

Our Services:

Resettlement

Offering support to those who are homeless or at risk of homelessness, giving information regarding eviction notices, rights & entitlements, help with applying for housing costs, local welfare assistance and tenancy health checks.

Community

We can support with benefit maximisation, debt management, employability skills, emergency food parcels and we facilitate a number of groups: Well-Being Group, Gardening Group, Men's Meet and Eat and Time for You. We run a Community Food Store on a weekly basis on a Friday.

Children & Young People

We run weekly after school sessions for children aged 5-12 years. We offer extra clubs in school holidays which include larger scale sessions and trips. We also facilitate an 'Us Girls' session every Wednesday 5.15pm-6.15pm.

Bridlington & Beyond "COMMUNITY CONVERSATIONS" Networking & Activity Day



Friday 28th October, 11am-2pm
Crown Community Building
Quay Road, Bridlington. YO16 4LS

Activities Include

Information Stalls • Taster Sessions
Interactive Fire Engine Experience
Children's Games & Crafts • Refreshments throughout



HUMBERSIDE
Fire & Rescue Service



QUIZ NIGHT



**The
Hinge
Centre**



AT THE TOWN BAR - BRIDLINGTON FOOTBALL CLUB

FRIDAY
11TH
NOVEMBER

DOORS OPEN
7PM

6 MEMBERS
PER TEAM
(MAX)
£3 PER
PERSON

TO BOOK YOUR TEAM ON EMAIL
sarah@thehinge.org.uk
BY FRIDAY 4TH NOVEMBER.



AFTER SCHOOL CLUBS

STARTING MONDAY 31ST
OCTOBER

MONDAY - FRIDAY 4PM - 5PM

MONDAY - Tea at The Hinge - Field Road £1
TUESDAY - Little Chef's - Crown Building - £1
WEDNESDAY - Homework Club - Field Road - Free
(50p tuck shop)
THURSDAY - Creative Kids - Crown Building - 50p
FRIDAY - Activ Kids (various locations) Free

ALL SESSIONS MUST BE BOOKED BY CONTACTING US ON: 01262 679671



Community Food Store

Every Friday

alternative weeks @

The Hinge Centre Cabin +
The Crown Community Building
Slots available between 9:45-11:30am.
Check social media for dates.

Book your place in advance

Contact us: 01262 679671, info@thehinge.org.uk



The Hinge Centre

Opening Hours:

Crown Community - Monday to Friday 9.30am till 4pm

Field Road - Monday & Wednesday 9.30am till 4pm

Key: Crown Community

Field Road

MONDAY	TUESDAY	WEDNESDAY	THURSDAY	FRIDAY
10am-12am Pottering Club & The Budget Cooking Class	10am-12pm Hinge Healthy Minds		10.30am-12pm Independent Living for Adults with Learning Disabilities	9.30am-11.30am Community Food Store Alternate weeks at each building
1pm-2pm Time for You		12pm-1.30pm Mens Meet and Eat	1pm-3pm Craft for Health	10.30am-12pm Independent Living for Adults with Learning Disabilities (fortnightly)
4pm-5pm Kids club Tea at The Hinge	4pm-5pm Kids Club Little Chef's	4pm-5pm After School Matters	4pm-5pm Kids Club Homework Session	4pm-5pm Kids Club Sports/Games & Fitness

01262 679671

info@thehinge.org.uk

www.thehinge.org.uk